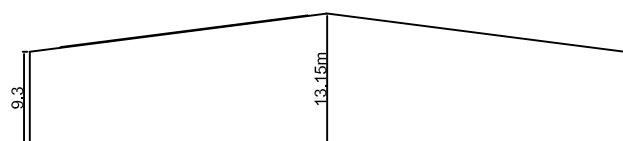
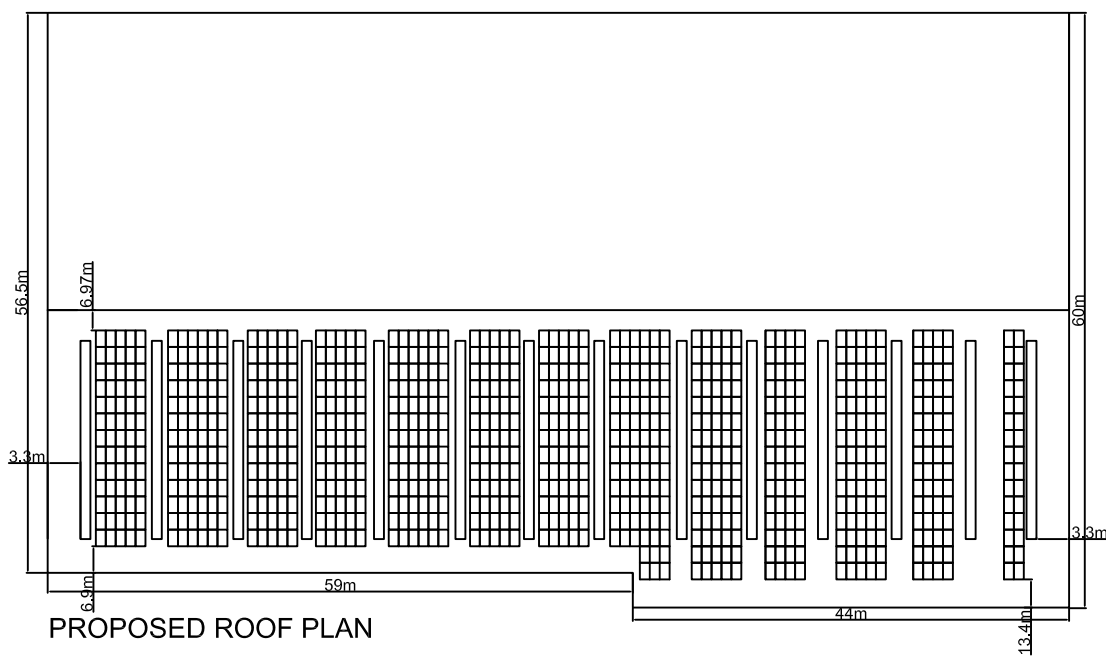


PROPOSED SITE PLAN

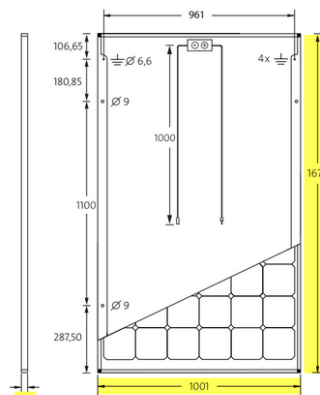


PROPOSED FRONT ELEVATION

TECHNICAL SPECIFICATION



PROPOSED ROOF PLAN



Product properties	
Dimensions	Hitachi 7x39 mm
Length of the rail	390 mm
Weight	0.200 kg
Colour	Black Aluminium
Cross section A	0.288 m ²
Top rail channel	Click profile inside
SSB is recommended	Yes
Application properties	
Attachment to installation surface	Attachment with screws
Type of roof	Pitched roof



HITACHI PLANT BUILDING
MONKTON BUSINESS PARK NORTH
HEBBURN
NE31 2JZ

Advances Renewable Power Ltd
One Trinity Green
Eldon Street
South Shields
NE33 1SA

New Solar Panels to Roof

August 2016

1.250

Solar Panel
Proposals -
Proposed
Layouts